

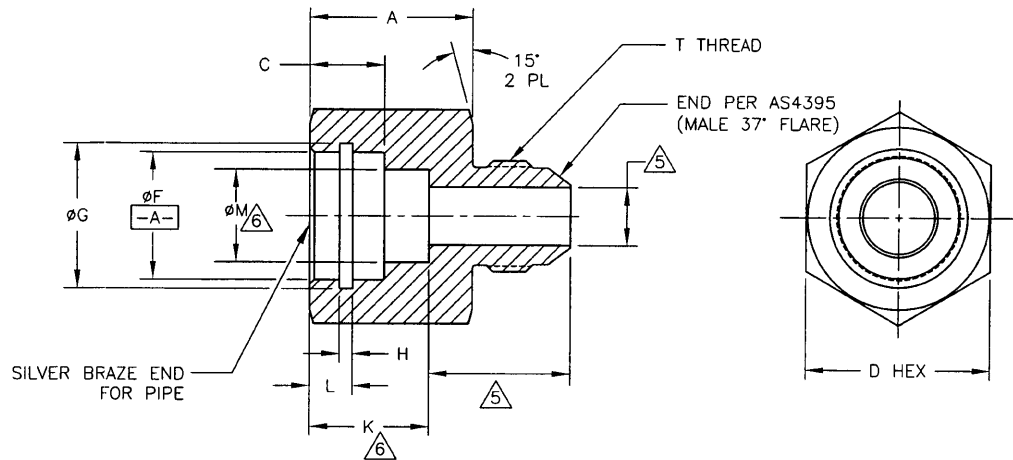
1ST DASH NO.	DESCRIPTION
-2	CRES 316
-5	MONEL
-6	70-30 COPPER-NICKEL
-7	90-10 COPPER-NICKEL

2ND DASH NO.	PIPE SIZE	A	C	D	ØF	ØG	H	K <sup>+0.03</sup> / <sub>-0.00</sub>	L	ØM
-02	1/8		.38		.41	.50	.08	.58	.23	.27
-04	1/4	.72	.38	.69	.54	.64	.08	.62	.23	.36
-06	3/8	.89	.47	1.00	.68	.77	.08	.69	.23	.49
-08	1/2	1.00	.56	1.00	.84	.96	.19	.88	.34	.62
-10		1.17		1.44						
-12	3/4	1.18	.69	1.44	1.05	1.17	.19	.94	.34	.83
-16	1	1.30	.81	1.69	1.32	1.43	.19	1.12	.34	1.04
-20	1 1/4	1.48	.94	2.00	1.66	1.84	.26	1.25	.41	1.46
-24	1 1/2	1.94	1.06	2.62	1.90	2.08	.26	1.37	.41	1.70
-32	2	2.31	1.25	3.25	2.38	2.55	.26	1.56	.41	2.18

3RD DASH NO.	T THREAD
-04	7/16-20
-06	9/16-18
-08	3/4-16
-10	7/8-14
-12	1 1/16-12
-16	1 5/16-12
-20	1 5/8-12
-24	1 7/8-12
-32	2 1/2-12

This drawing contains designs and other information which are the property of PREECE INC. Except for rights expressly granted by contract to the United States Government, this drawing may not, in whole or in part, be duplicated or disclosed or used for the manufacture of the part disclosed herein, without the written permission of PREECE INC.

LTR	DESCRIPTION	DATE	APPROVED
N/C	INITIAL RELEASE PER EO 5878	9/19/96	KC
A	REVISED PER EO 6152	4/3/97	KC
B	REVISED PER EO 9858	6/9/05	D.L.
C	REVISED PER EO 10222	3/30/06	D.L.
D	REVISED PER EO 10741	3/12/07	<i>[Signature]</i>



SAMPLE PART NUMBER  
3828-2-08-08

BASIC P/N ———  
MATERIAL DESIGNATION (TABLE 1) ———  
THREAD SIZE PER AS4395 (TABLE 3) ———  
NOMINAL PIPE SIZE (TABLE 2) ———

- 7 DELETED
  - 6 "ØM" TO BE MACHINED TO DEPTH "K" ONLY, NOT THRU
  - 5 PORT DIA TO BE MACHINED TO "K" ONLY, NOT THRU, DRILL POINT ANGLE ACCEPTABLE
  - 4. ALL DIA  $\sqrt[.010]{A}$
  - 3. DEBURR AND BREAK SHARP EDGES.
  - 2. DIMENSIONS AND TOLERANCES PER ANSI Y14.5-1982.
  - 1. INTERPRET DWG PER DOD-STD-100C.
- NOTES: UNLESS OTHERWISE SPECIFIED

**MASTER**

UNLESS OTHERWISE SPECIFIED: DIMENSIONS ARE IN INCHES TOLERANCES XXX = ± .010 XX = ± .015 X = ± .1 ANGLES = 20°/30°		<b>PREECE INC.</b> 11 CHRYSLER IRVINE, CA 92618		<b>DECCA VALVES</b> A DIVISION OF PREECE INC.	
CAD FILES	3828	<b>ADAPTER, MALE FLARE TO FEMALE SIL-BRAZE</b>			
DFT	RN 3/26/97				
CHK	RN 3/27/97	SIZE	CODE IDENT NO.	DWG NO.	REV LTR
DES		B	21392	3828	D
OTHER ACTIVITY APPD		SCALE	NONE	RLSE DATE	SHEET 1 OF 1
PREECE APPD	K. CHING 09/19/96				

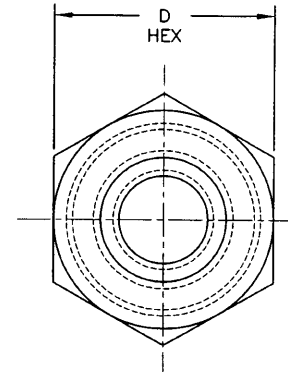
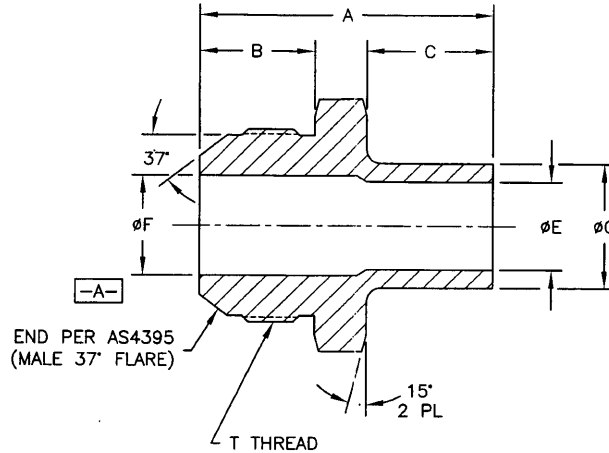
1ST DASH NO.	DESCRIPTION
-2	CRES 316
-5	MONEL
-6	70-30 COPPER-NICKEL
-7	90-10 COPPER-NICKEL
-8	BRASS 360

2ND DASH NO.	PIPE SIZE	C	E	G
-02	1/8	.62	.17	.40
-04	1/4	.62	.30	.54
-06	3/8	.72	.47	.67
-08	1/2	.81	.59	.84
-12	3/4	1.06	.74	1.05
-16	1	1.19	.93	1.31
-20	1 1/4	1.44	1.17	1.66
-24	1 1/2	1.56	1.31	1.90
-32	2	1.75	1.65	2.38

3RD DASH NO.	T THREAD	A	B	D	F
-04	7/16-20	1.36	.55	.50	.17
-06	9/16-18	1.52	.56	.69	.30
-08	3/4-16	1.78	.66	.94	.39
-10	7/8-14	1.88	.76	.94	.48
-12	1 1/16-12	2.06	.86	1.12	.59
-16	1 5/16-12	2.35	.91	1.38	.84
-20	1 5/8-12	2.59	.96	1.69	1.08
-24	1 7/8-12	3.14	1.08	2.00	1.31
-32	2 1/2-12	3.77	1.33	2.56	1.78

This drawing contains designs and other information which are the property of PREECE INC. Except for rights expressly granted by contract to the United States Government, this drawing may not, in whole or in part, be duplicated or disclosed or used for the manufacture of the part disclosed herein, without the written permission of PREECE INC.

LTR	DESCRIPTION	DATE	APPROVED
N/C	INITIAL RELEASE PER EO 5878	9/19/96	KC
A	REVISED PER EO 6143	3/31/97	KC
B	REVISED PER EO 7600	6/19/00	KC
C	REVISED PER EO 8661	3/18/02	KC
D	REVISED PER EO 11202	6/4/08	[Signature]



SAMPLE PART NUMBER

3843-2-08-08

BASIC P/N ————  
 MATERIAL DESIGNATION (TABLE 1) ————  
 THREAD SIZE PER AS4395 (TABLE 3) ————  
 NOMINAL PIPE SIZE (TABLE 2) ————

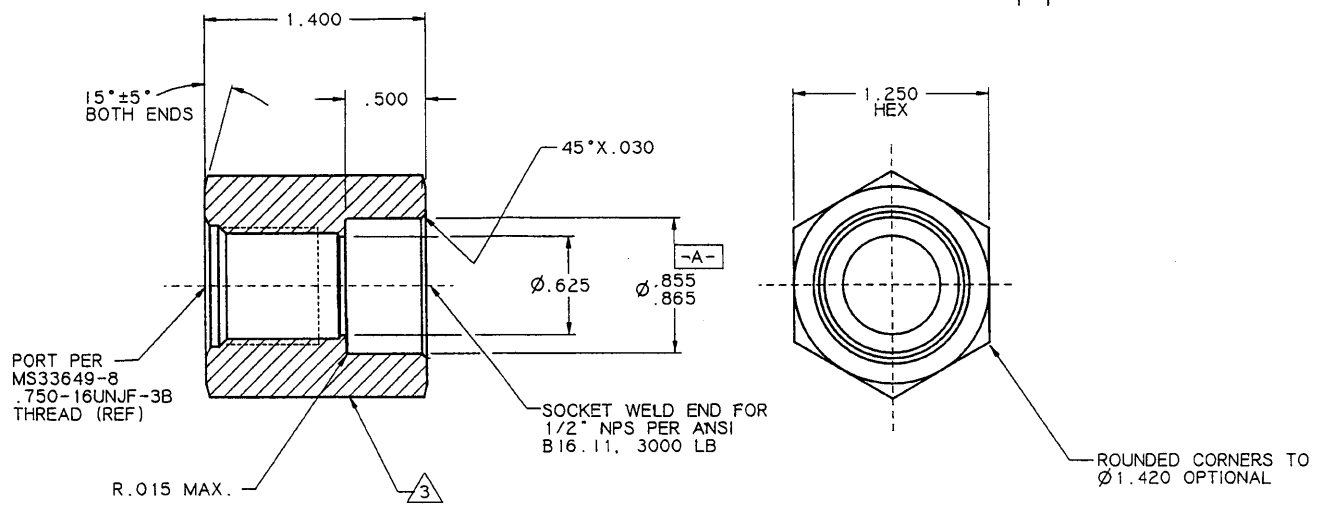
4. ALL DIA  $\frac{Z}{A}$  .010 A
  3. DEBURR AND BREAK SHARP EDGES.
  2. DIMENSIONS AND TOLERANCES PER ANSI Y14.5-1982.
  1. INTERPRET DWG PER DOD-STD-100C.
- NOTES: UNLESS OTHERWISE SPECIFIED

MASTER

UNLESS OTHERWISE SPECIFIED: DIMENSIONS ARE IN INCHES TOLERANCES .XX = ± .010 .XX = ± .03 .X = ± .1 ANGLES = 30°/30°		<b>Pi PREECE INC.</b> 11 CHRYSLER IRVINE, CA 92618		<b>DECCA</b> A DIVISION OF PREECE INC.	
CAD FILES	3843	ADAPTER, MALE FLARE TO MALE SIL-BRAZE			
DFT	MH 3/4/97	SIZE	CODE IDENT NO.	DWG NO.	REV LTR
CHK	RN 96/09/18	B	21392	3843	D
DES		OTHER ACTIVITY APPD		PREECE APPD	
	K. CHING	09/19/96	SCALE 1:1	RLSE DATE	SHEET 1 OF 1

This drawing contains designs and other information which are the property of PREECE INC. Except for rights expressly granted by contract to the United States Government, this drawing may not, in whole or in part, be duplicated or disclosed or used for manufacture of the part disclosed herein, without the written permission of PREECE INC.

REVISIONS			
LTR	DESCRIPTION	DATE	APPROVED
N/C	INITIAL RELEASE PER EO 5725	4/25/76	[Signature]



- 6. DEBURR AND BREAK SHARP EDGES.
- 5. MATERIAL AND FINISH:  
CRES 316 PER QQ-S-763 OR ASTM A-312  
PASSIVATE PER QQ-P-35 OR  
ELECTROPOLISH PER OD 52533.
- 4. ALL DIA  $\frac{.010}{A}$
- 3. MARK PER MIL-STD-130 (ELECTROETCH ON HEX, LOCATION OPTIONAL)  
PREECE INC. 21392  
P/N 3896 REV.  
DATE OF MFR:

2. DIMENSIONS AND TOLERANCES PER ANSI Y14.5M-1982  
1. INTERPRET DWG PER DOD - STD - 100C  
NOTES: UNLESS OTHERWISE SPECIFIED

WORKING COPY

QTY REQD	ITEM NO.	PART OR IDENTIFYING NO.	NOMENCLATURE	MATERIAL	FINISH
		← ASSY	PARTS LIST		
UNLESS OTHERWISE SPECIFIED: DIMENSIONS ARE IN INCHES TOLERANCES ON: .XXX = ±.010 .XX = ±.03 .X = ±.1 CHAMFER ANGLES = ±5° OTHER ANGLES = ±9°30' THD PER HANDBOOK H28		CAD FILES	3896		
		DFT	LCL 4/18/96	11 CHRYSLER, IRVINE, CA 92718 A DIVISION OF PREECE, INC.	
		CHK		ADAPTER, .750-16UNJF-3B FEMALE X 1/2" NPS SOCKET WELD, CRES	
		VALUE ENGR		SIZE CODE IDENT NO. DWG NO. REV LTR <b>C 21392 3896 N/C</b>	
		MATL		SCALE 2/1 RLSE DATE SHEET OF	
		STRESS			
		APPO			
		PREECE APPO			
		OTHER ACTIVITY APPO			
REQD	NEXT ASSY	USED ON			
APPLICATION					

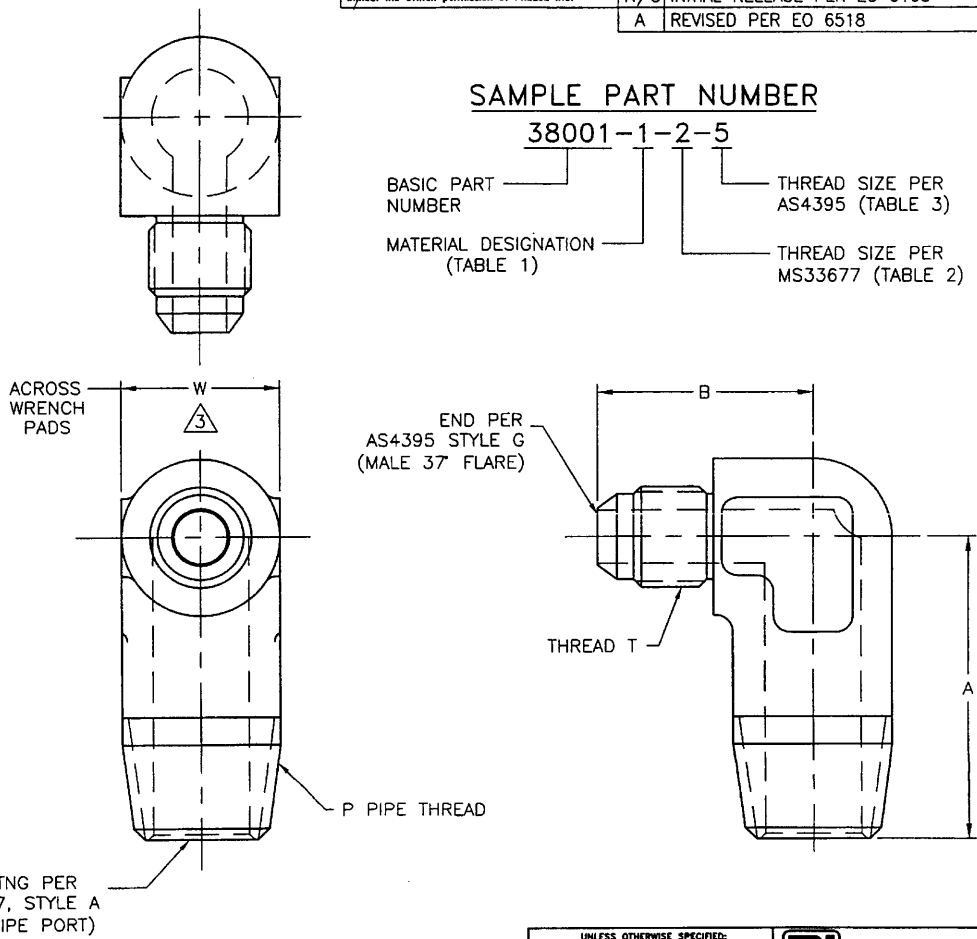
This drawing contains designs and other information which are the property of PREECE INC. Except for rights expressly granted by contract to the United States Government, this drawing may not, in whole or in part, be duplicated or disclosed or used for the manufacture of the part disclosed herein, without the written permission of PREECE INC.

REVISIONS			
LTR	DESCRIPTION	DATE	APPROVED
N/C	INITIAL RELEASE PER EO 6105	03/31/97	K.C.
A	REVISED PER EO 6518	5/1/98	<i>[Signature]</i>

DASH NO.	DESCRIPTION
-1	CRES 304
-2	CRES 316
-3	AL ALY 7705-T6
-4	INCONEL
-5	MONEL
-6	70-30 COPPER-NICKEL
-7	90-10 COPPER-NICKEL

2ND DASH NO.	THREAD PER MIL-P-7105	A ±.03	W $\Delta_3$ ±.010
-2	1/8-27	1.09	.312
-4	1/4-18	1.22	.562
-6	3/8-18	1.33	.875
-8	1/2-14	1.68	.875
-12	3/4-14	1.78	1.062
-16	1-11-1/2	2.13	1.312
-20	1-1/4-11-1/2	2.50	1.625
-24	1-1/2-11-1/2	2.95	2.250
-32	2-11-1/2	3.00	2.562

3RD DASH NO.	THREAD PER MIL-S-8879-3A	B ±.03	W $\Delta_3$ ±.010
-3	3/8-24UNJF	.83	.375
-4	7/16-20UNJF	1.05	.562
-5	1/2-20UNJF	1.05	.562
-6	9/16-18UNJF	1.18	.875
-8	3/4-16UNJF	1.33	.875
-10	7/8-14UNJF	1.54	1.062
-12	1 1/16-12UNJ	1.76	1.312
-16	1 5/16-12UNJ	2.09	1.312
-20	1 5/8-12UNJ	2.30	1.625
-24	1 7/8-12UNJ	2.33	2.250
-32	2 1/2-12UNJ	3.08	2.562



**SAMPLE PART NUMBER**

**38001-1-2-5**

BASIC PART NUMBER ————  
 MATERIAL DESIGNATION (TABLE 1) ————  
 THREAD SIZE PER AS4395 (TABLE 3) ————  
 THREAD SIZE PER MS33677 (TABLE 2) ————

**WORKING COPY**

- $\Delta_3$  WRENCH PADS WIDTH TO BE DETERMINED BY THE LARGER OF END FITTING SIZE.  
 2. DIMENSIONS AND TOLERANCES PER ANSI Y14.5M-1982  
 1. INTERPRET DRAWING PER DOD-STD-100C.  
 NOTES: UNLESS OTHERWISE SPECIFIED.

MASTER

UNLESS OTHERWISE SPECIFIED: DIMENSIONS ARE IN INCHES TOLERANCES .XXX = ±.010 .XX = ±.03 .X = ±.1 ANGLES = 30°/30°		<b>Pi PREECE INC.</b> 11 CHRYSLER IRVINE, CA 92618		<b>DECCA VALVES</b> A DIVISION OF PREECE INC.
CAD FILES	38001	ADAPTER, 90° ELBOW, MALE PIPE TO MALE 37° FLARE		
OPF	M.H.	02/20/97	SIZE	CODE IDENT NO.
CHK	R.N.	03/28/97	B	21392
DWG			DWG NO.	38001
OTHER ACTIVITY APPD			REV	LTR
PREECE APPD	K. CHING	03/31/97	A	
SCALE 1/1		RLSE DATE	SHEET 1 OF 1	

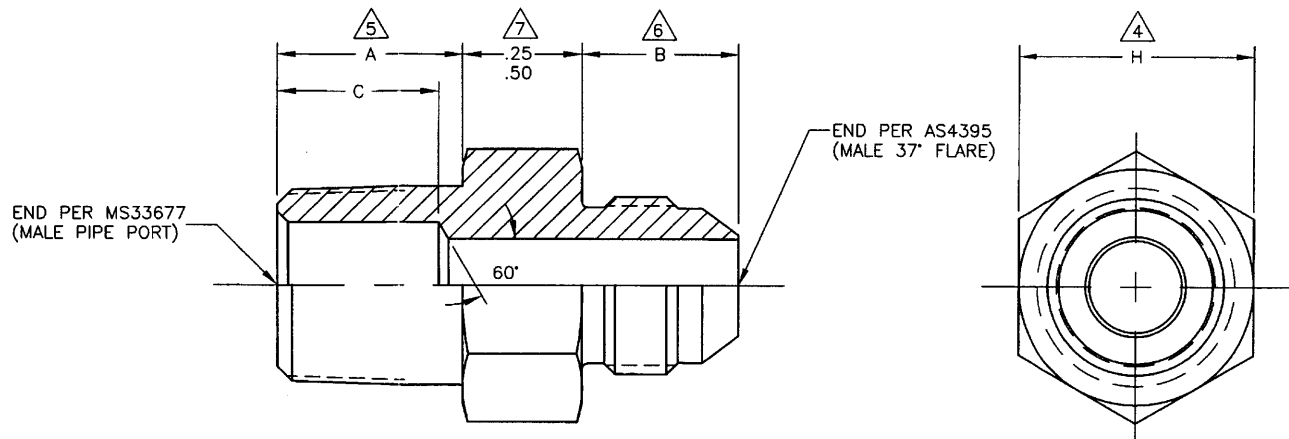
TABLE 1: ADAPTER MATERIAL	
DASH NO.	DESCRIPTION
-1	CRES 304
-2	CRES 316
-3	AL ALLY 7075-T6
-4	INCONEL
-5	MONEL
-6	70-30 COPPER-NICKEL
-7	90-10 COPPER-NICKEL
-8	BRASS 360

TABLE 2: NPT				
2ND DASH NO.	THREAD PER MIL-P-7105	$\Delta A$ $\pm .015$	C	$\Delta H$ $\pm .010$
-2	1/8-27	.391	.341	.500
-4	1/4-18	.594	.544	.688
-6	3/8-18	.609	.559	.813
-8	1/2-14	.781	.831	1.000
-12	3/4-14	.797	.747	1.375
-16	1-11-1/2	.984	.934	1.625
-20	1-1/4-11-1/2	1.016	.966	1.875
-24	1-1/2-11-1/2	1.031	.981	2.125
-32	2-11-1/2	1.062	1.012	2.750

TABLE 3: 37° MALE FLARE			
3RD DASH NO.	THREAD PER MIL-S-8879-3A	$\Delta B$ $\pm .015$	$\Delta H$ $\pm .010$
-3	3/8-24UNJF	.479	.625
-4	7/16-20UNJF	.550	.688
-5	1/2-20UNJF	.550	.750
-6	9/16-18UNJF	.556	.813
-8	3/4-16UNJF	.657	1.000
-10	7/8-14UNJF	.758	1.125
-12	1 1/16-12UNJ	.864	1.375
-16	1 5/16-12UNJ	.911	1.625
-20	1 5/8-12UNJ	.958	1.875
-24	1 7/8-12UNJ	1.083	2.125
-32	2 1/2-12UNJ	1.333	2.750

This drawing contains designs and other information which are the property of PREECE INC. Except for rights expressly granted by contract to the United States Government, this drawing may not, in whole or in part, be duplicated or disclosed or used for the manufacture of the part disclosed herein, without the written permission of PREECE INC.

REVISIONS			
LTR	DESCRIPTION	DATE	APPROVED
N/C	INITIAL RELEASE PER EO 6053	03/31/97	K.C.
A	REVISED PER EO 6519	05/01/98	K.C.
B	REVISED PER EO 7206	08/26/99	B.L.
C	REVISED PER EO 8249	5/31/02	K.C.
D	REVISED PER EO 8662	3/18/02	D.L.
E	REVISED PER EO 10988	12/11/07	D.L.



SAMPLE PART NUMBER

38002-1-04-06

BASIC PART NUMBER

THREAD SIZE PER AS4395 (TABLE 3)

MATERIAL DESIGNATION (TABLE 1)

THREAD SIZE PER MS33677 (TABLE 2)

$\Delta$  FOR DASH SIZES OF 2 TO 6, HEX WIDTH IS .25 IN.  
FOR DASH SIZES OF 8 OR GREATER, HEX WIDTH IS .50 IN.

$\Delta$  LENGTH "B" PER AS4395.

$\Delta$  LENGTH "A" PER MS33677.

$\Delta$  HEX SIZE IS DETERMINED BY THE LARGER END FITTING SIZE.

3. FINISH: ELECTROPOLISH CRES. ANODIZE (GOLD) ALUMINUM.

2. DIMENSIONS AND TOLERANCES PER ANSI Y14.5-1982.

1. INTERPRET DWG PER DOD-STD-100C.

NOTES: UNLESS OTHERWISE SPECIFIED

UNLESS OTHERWISE SPECIFIED: DIMENSIONS ARE IN INCHES TOLERANCES .XXX = $\pm .010$ .XX = $\pm .03$ .X = $\pm .1$ ANGLES = 30°/30°		<b>PREECE INC.</b> 11 CHRYSLER IRVINE, CA 92618		<b>DECCA VALVES</b> A DIVISION OF PREECE INC.
CAD FILES	38002	ADAPTER, MALE PIPE TO MALE 37° FLARE		
DFT	M.H.	01/24/97		
CHK	R.N.	03/28/97		
DES			SIZE	CODE IDENT NO.
OTHER ACTIVITY APPD			B	21392
PREECE APPD	K.CHING	03/31/97	DWG NO.	38002
			REV LTR	E
SCALE NONE		RLSE DATE		SHEET 1 OF 1

MASTER

1ST DASH NO.	DESCRIPTION
-2	CRES 316
-5	MONEL
-6	70-30 COPPER NICKEL
-7	90-10 COPPER NICKEL
-8	NICKEL COPPER PER QQ-N-281

2ND DASH NO.	PIPE SIZE	A	B	C	D $\begin{matrix} +.03 \\ -.00 \end{matrix}$	E $\begin{matrix} \triangle \\ 7 \end{matrix}$	F
-04	1/4	.54	.36	.38	.62	.88	.79
-06	3/8	.68	.49	.47	.69	1.00	.95
-08	1/2	.84	.62	.56	.88	1.25	1.22
-12	3/4	1.05	.83	.69	.94	1.37	1.30
-16	1	1.32	1.04	.81	1.12	2.00	1.49
-20	1-1/4	1.66	1.38	.81	1.25	2.50	1.62
-24	1-1/2	1.90	1.61	.81	1.25	3.00	1.62
-32	2	2.40	2.07	.93	1.37	3.50	1.74

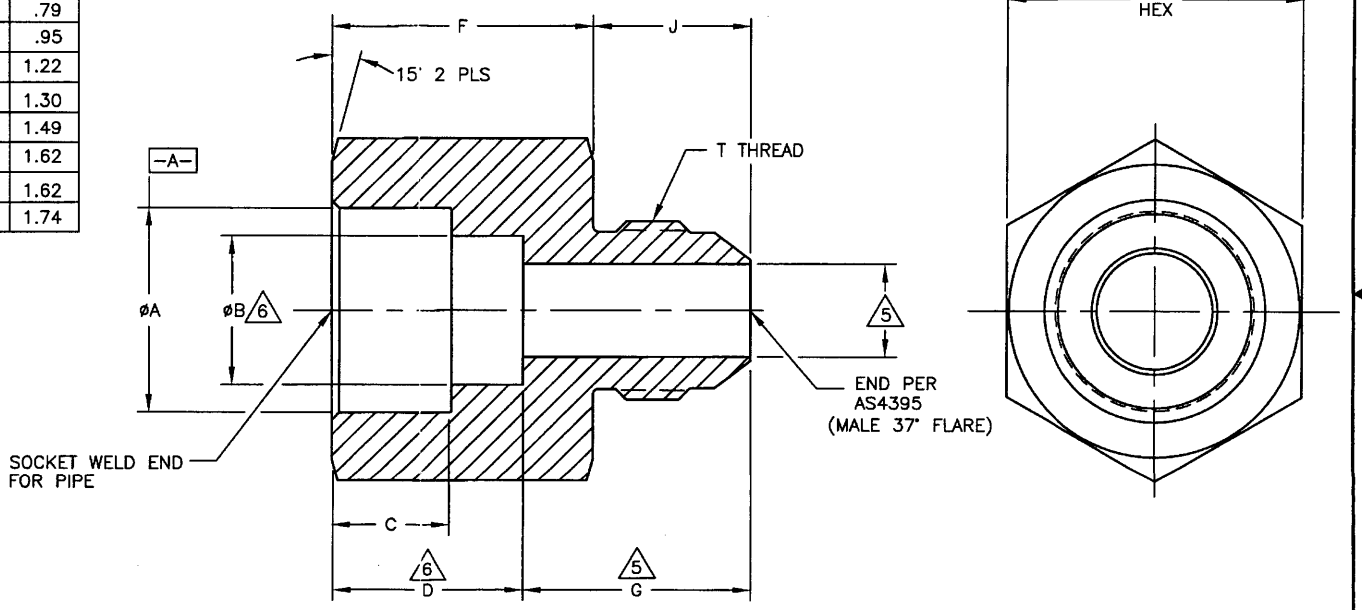
3RD DASH NO.	T THREAD	E $\begin{matrix} \triangle \\ 7 \end{matrix}$	J
-04	7/16-20	.69	.550
-05	1/2-20	.75	.550
-06	9/16-18	.81	.556
-08	3/4-16	1.00	.657
-10	7/8-14	1.12	.758
-12	1 1/16-12	1.37	.864
-16	1 5/16-12	1.63	.911
-20	1 5/8-12	2.00	.958
-24	1 7/8-12	2.13	1.083
-32	2 1/2-12	2.75	1.333

This drawing contains designs and other information which are the property of PREECE INC. Except for rights expressly granted by contract to the United States Government, this drawing may not, in whole or in part, be duplicated or disclosed or used for the manufacture of the part disclosed herein, without the written permission of PREECE INC.

LTR	DESCRIPTION	DATE	APPROVED
N/C	INITIAL RELEASE PER EO 6150	04/03/97	K.C.
A	REVISED PER EO 6255	07/17/97	K.C.
B	REVISED PER EO 6524	05/06/98	K.C.
C	REVISED PER EO 6544	05/27/98	K.C.
D	REVISED PER EO 10544	12/18/06	<i>[Signature]</i>

SAMPLE PART NUMBER  
38003-1-08-10

BASIC PART NUMBER  
MATERIAL DESIGNATION (TABLE 1)  
THREAD SIZE PER AS4395 (TABLE 3)  
PIPE SIZE (TABLE 2)



- $\begin{matrix} \triangle \\ 7 \end{matrix}$  HEX SIZE IS DETERMINED BY THE LARGER OF THE TWO HEX DIMENSIONS.
  - $\begin{matrix} \triangle \\ 6 \end{matrix}$  "ØB" TO BE MACHINED TO DEPTH "D" ONLY, NOT THRU.
  - $\begin{matrix} \triangle \\ 5 \end{matrix}$  PORT DIA TO BE MACHINED TO DEPTH "G" ONLY, NOT THRU. DEPTH WILL VARY DEPENDING ON CONFIGURATION CHOSEN.
  - 4. ALL DIA  $\begin{matrix} \text{Ø} \\ \text{A} \end{matrix}$  .010
  - 3. DEBURR AND BREAK SHARP EDGES.
  - 2. DIMENSIONS AND TOLERANCES PER ANSI Y14.5-1982.
  - 1. INTERPRET DWG PER DOD-STD-100C.
- NOTES: UNLESS OTHERWISE SPECIFIED

MASTER

UNLESS OTHERWISE SPECIFIED: DIMENSIONS ARE IN INCHES TOLERANCES HOLE = $\pm .010$ FIT = $\pm .03$ X = $\pm .1$ ANGLES = $30^\circ/30^\circ$		<b>PREECE INC.</b> 11 CHRYSLER AVE, CA 92818		<b>DECCA VALVES</b> A DIVISION OF PREECE INC.
CAD FILES	38003	ADAPTER, SOCKET WELD x AS4395		
APP	M.H.	03/04/97		
CHK				
DES				
OTHER ACTIVITY APPD				
PREECE APPD	K.CHING	04/03/97	SIZE B	CODE IDENT NO. 21392
			DWG NO. 38003	REV LTR D
			SCALE 2/1	RLSE DATE
			SHEET 1 OF 1	

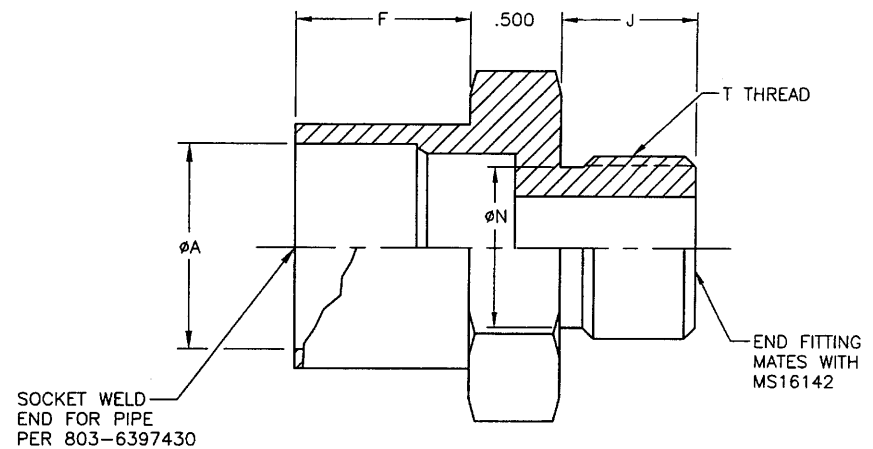
1ST DASH NO.	DESCRIPTION
-1	CRES 304
-2	CRES 316
-5	MONEL PER QQ-N-281
-6	70-30 COPPER-NICKEL PER MIL-C-15726
-7	90-10 COPPER-NICKEL PER MIL-C-15726

2ND DASH NUMBER	PIPE SIZE	$\phi A$ +.030 -.000	F $\pm .010$
-04	1/4	.545	.535
-06	3/8	.680	.575
-08	1/2	.845	.695
-12	3/4	1.055	.765
-16	1	1.320	.890
-20	1 1/4	1.665	.980
-24	1 1/2	1.905	1.010
-32	2	2.380	1.150

3RD DASH NUMBER	T THREAD	J $\pm .005$	$\phi N$ +.002 -.003
-02	5/16-24UNF-2A	.297	.250
-03	3/8-24UNF-2A	.297	.313
-04	7/16-20UNF-2A	.360	.364
-05	1/2-20UNF-2A	.360	.427
-06	9/16-18UNF-2A	.391	.482
-08	3/4-16UNF-2A	.438	.660
-10	7/8-14UNF-2A	.500	.773
-12	1 1/16-12UN-2A	.594	.945
-14	1 3/16-12UN-2A	.594	1.070
-16	1 5/16-12UN-2A	.594	1.195
-20	1 5/8-12UN-2A	.594	1.507
-24	1 7/8-12UN-2A	.594	1.756
-32	2 1/2-12UN-2A	.594	2.381

This drawing contains designs and other information which are the property of PREECE INC. Except for rights expressly granted by contract to the United States Government, this drawing may not, in whole or in part, be duplicated or disclosed or used for the manufacture of the part disclosed herein, without the written permission of PREECE INC.

LTR	DESCRIPTION	DATE	APPROVED
N/C	INITIAL RELEASE PER EO 6315	10/21/95	K.C.
A	REVISED PER EO 6375	12/12/97	<i>[Signature]</i>



WORKING COPY

SAMPLE PART NUMBER  
38004-1-08-10

BASIC PART NUMBER

MATERIAL DESIGNATION (TABLE 1)

THREAD SIZE MATES WITH MS16142 (TABLE 3)

PIPE SIZE (TABLE 2)

UNLESS OTHERWISE SPECIFIED: DIMENSIONS ARE IN INCHES TOLERANCES .XX = $\pm .010$ .XX = $\pm .03$ .X = $\pm .1$ ANGLES = 30°/30°		<b>PI PREECE INC.</b> 11 CHRYSLER IRVINE, CA 92618		<b>DECCA</b> VALVES A DIVISION OF PREECE INC.
CAD FILES	38004-S	ADAPTER, CLASS 400 PSI SOCKET WELD TO STRAIGHT THREAD		
DPT	J.G. 07/07/97	SIZE	CODE IDENT NO.	DWG NO.
CHK	P.S. 10/21/97	B	21392	38004-S
DES		OTHER ACTIVITY APPD		REV LTR
PREECE APPD	K.CHING 10/21/97	SCALE	2/1	RLSE DATE
				SHEET 1 OF 1

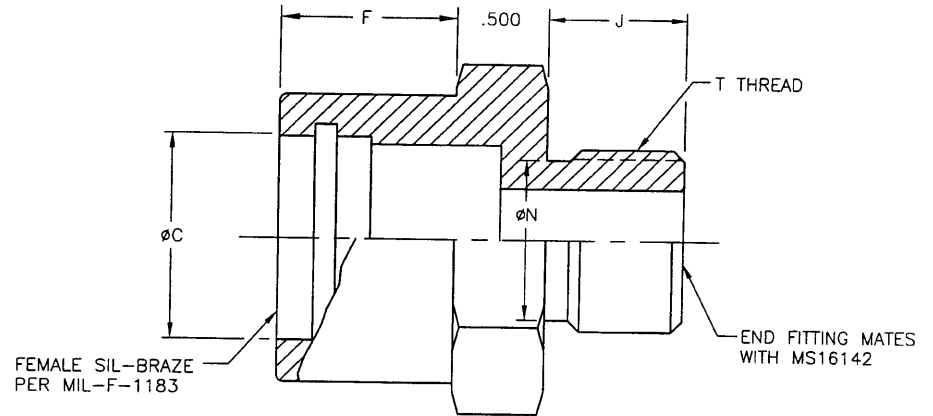
TABLE 1: ADAPTER MATERIAL	
1ST DASH NO.	DESCRIPTION
-1	CRES 304
-2	CRES 316
-5	MONEL PER QQ-N-281
-6	70-30 COPPER-NICKEL PER MIL-C-15726
-7	90-10 COPPER-NICKEL PER MIL-C-15726

TABLE 2: PIPE SIZE			
2ND DASH NUMBER	NOM PIPE SIZE	ØC + .003 - .000	F ± .015
-04	1/4	.540	.535
-06	3/8	.675	.575
-08	1/2	.840	.650
-12	3/4	1.050	.700
-16	1	1.315	.730
-20	1 1/4	1.660	.800
-24	1 1/2	1.900	.925
-32	2	2.375	.955

TABLE 3: THREAD SIZE			
3RD DASH NUMBER	T THREAD	J ± .005	N + .002 - .003
-02	5/16-24UNF-2A	.297	.250
-03	3/8 -24UNF-2A	.297	.313
-04	7/16-20UNF-2A	.360	.364
-05	1/2 -20UNF-2A	.360	.427
-06	9/16-18UNF-2A	.391	.482
-08	3/4 -16UNF-2A	.438	.660
-10	7/8 -14UNF-2A	.500	.773
-12	1 1/16-12UN -2A	.594	.945
-14	1 3/16-12UN -2A	.594	1.070
-16	1 5/16-12UN -2A	.594	1.195
-20	1 5/8 -12UN -2A	.594	1.507
-24	1 7/8 -12UN -2A	.594	1.756
-32	2 1/2 -12UN -2A	.594	2.381

This drawing contains designs and other information which are the property of PREECE INC. Except for rights expressly granted by contract to the United States Government, this drawing may not, in whole or in part, be duplicated or disclosed or used for the manufacture of its part disclosed herein, without the written permission of PREECE INC.

REVISIONS			
LTR	DESCRIPTION	DATE	APPROVED
N/C	INITIAL RELEASE PER EO 6312	10/21/97	K.C.
A	REVISED PER EO 6376	12/12/97	<i>[Signature]</i>



WORKING COPY

SAMPLE PART NUMBER

38005-1-08-10

BASIC PART NUMBER

MATERIAL DESIGNATION  
(TABLE 1)

THREAD SIZE  
MATES WITH MS16142  
(TABLE 3)

PIPE SIZE  
(TABLE 2)

UNLESS OTHERWISE SPECIFIED: DIMENSIONS ARE IN INCHES		<b>Pi PREECE INC.</b> 11 CHRYSLER IRVINE, CA 92618		<b>DECCA VALVES</b> A DIVISION OF PREECE INC.	
TOLERANCES					
.XXK = ± .010					
.XX = ± .03					
.X = ± .1					
ANGLES = 30°/30°					
CAD FILES	38005-S	ADAPTER, 400 PSI FEMALE SIL-BRAZE TO STRAIGHT THREAD			
OPF	J.G.	07/07/97			
CHK	P.S.	10/21/97			
DES					
OTHER ACTIVITY APPD					
PREECE APPD	K.CHING	10/21/97	SIZE B	CODE IDENT NO. 21392	DWG NO. 38005-S
			SCALE 2/1	RLSE DATE	REV LTR A
					SHEET 1 OF 1

This drawing contains designs and other information which are the property of PREECE INC. Except for rights expressly granted by contract to the United States Government, this drawing may not, in whole or in part, be duplicated or disclosed or used for the manufacture of the part disclosed herein, without the written permission of PREECE INC.

REVISIONS

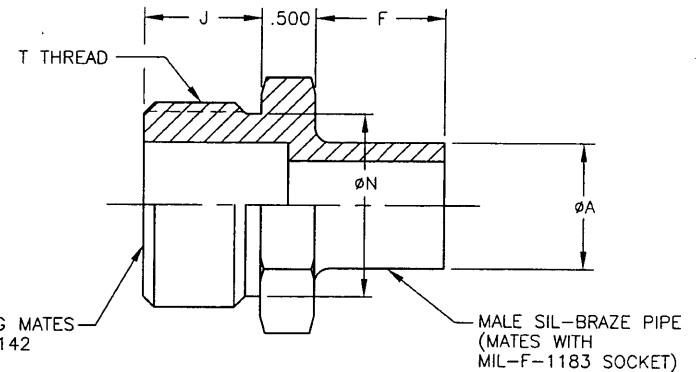
LTR	DESCRIPTION	DATE	APPROVED
N/C	INITIAL RELEASE PER EO 6314	10/21/97	K.C.
A	REVISED PER EO 6377	12/12/97	<i>PC</i>

**TABLE 1: ADAPTER MATERIAL**

1ST DASH NUMBER	DESCRIPTION
-1	CRES 304
-2	CRES 316
-5	MONEL PER QQ-N-281
-6	70-30 COPPER-NICKEL PER MIL-C-15726
-7	90-10 COPPER-NICKEL PER MIL-C-15726

**TABLE 2: PIPE SIZE**

2ND DASH NUMBER	PIPE SIZE	ØA +.000 -.002	F
-04	1/4	.539	.781
-06	3/8	.674	.828
-08	1/2	.839	.890
-12	3/4	1.049	1.060
-16	1	1.314	1.190
-20	1 1/4	1.659	1.440
-24	1 1/2	1.899	1.560
-32	2	2.374	1.750



**TABLE 3: THREAD SIZE**

3RD DASH NUMBER	T THREAD	J ±.005	N +.002 -.003
-02	5/16-24UNF-2A	.297	.250
-03	3/8-24UNF-2A	.297	.313
-04	7/16-20UNF-2A	.360	.364
-05	1/2-20UNF-2A	.360	.427
-06	9/16-18UNF-2A	.391	.482
-08	3/4-16UNF-2A	.438	.660
-10	7/8-14UNF-2A	.500	.773
-12	1 1/16-12UN -2A	.594	.945
-14	1 3/16-12UN -2A	.594	1.070
-16	1 5/16-12UN -2A	.594	1.195
-20	1 5/8-12UN -2A	.594	1.507
-24	1 7/8-12UN -2A	.594	1.756
-32	2 1/2-12UN -2A	.594	2.381

WORKING COPY

SAMPLE PART NUMBER

38006-2-08-16

BASIC PART NUMBER

MATERIAL DESIGNATION (TABLE 1)

THREAD SIZE MATES WITH MS16142 (TABLE 3)

NOMINAL PIPE SIZE (TABLE 2)

UNLESS OTHERWISE SPECIFIED: DIMENSIONS ARE IN INCHES TOLERANCES XXX = ± .010 XX = ± .03 X = ± .1 ANGLES = 80°30'		<b>PREECE INC.</b> 11 CHRYSLER IRVINE, CA 92618		<b>DECCA VALVE S</b> A DIVISION OF PREECE INC.
CAD FILES	38006S	ADAPTER, 400 PSI STRAIGHT THREAD TO MALE SIL-BRAZE		
DPT	J.G. 07/15/97	SIZE	CODE IDENT NO.	DWG NO.
CHK	P.S. 10/21/97	B	21392	38006-S
DES		REV	LTR	A
OTHER ACTIVITY APPD		SCALE	1/1	RLSE DATE
PREECE APPD	K. CHING 10/21/97			SHEET 1 OF 1

This drawing contains designs and other information which are the property of PREECE INC. Except for rights expressly granted by contract to the United States Government, this drawing may not, in whole or in part, be duplicated or disclosed or used for the manufacture of the part disclosed herein, without the written permission of PREECE INC.

REVISIONS

LTR	DESCRIPTION	DATE	APPROVED
N/C	INITIAL RELEASE PER EO 6313	10/21/97	K.C.
A	REVISED PER EO 6378	12/12/97	K.C.
B	REVISED PER EO 12893	2/8/11	[Signature]

TABLE 1: ADAPTER MATERIAL

1ST DASH NO.	DESCRIPTION
-1	CRES 304
-2	CRES 316
-5	MONEL PER QQ-N-281
-6	70-30 COPPER-NICKEL PER MIL-C-15726
-7	90-10 COPPER-NICKEL PER MIL-C-15726

TABLE 2: 37° FLARE

3RD DASH NUMBER	NOM TUBE OD	Z THREAD	ØF + .002 - .003	P ± .015
-02	1/8	5/16-24UNF-2A	.250	.448
-03	3/16	3/8-24UNF-2A	.313	.479
-04	1/4	7/16-20UNF-2A	.364	.550
-05	5/16	1/2-20UNF-2A	.427	.550
-06	3/8	9/16-18UNF-2A	.482	.556
-08	1/2	3/4-16UNF-2A	.660	.657
-10	5/8	7/8-14UNF-2A	.773	.758
-12	3/4	1 1/16-12UN -2A	.945	.864
-14	7/8	1 3/16-12UN -2A	1.070	.890
-16	1	1 5/16-12UN -2A	1.195	.911
-20	1 1/4	1 5/8-12UN -2A	1.507	.958
-24	1 1/2	1 7/8-12UN -2A	1.756	1.083
-32	2	2 1/2-12UN -2A	2.381	1.333

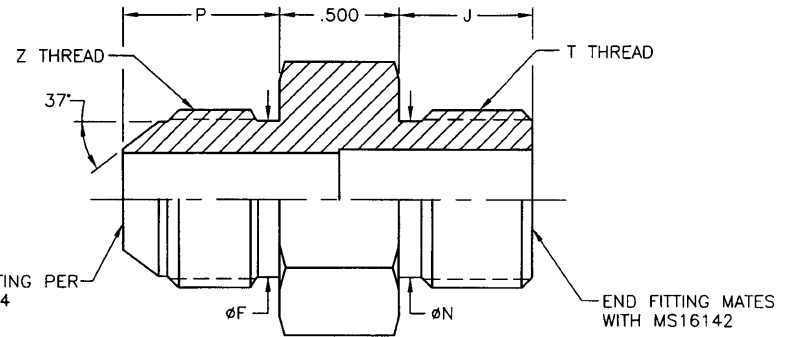


TABLE 3: THREAD SIZE

2ND DASH NUMBER	T THREAD	J ± .005	N + .002 - .003
-02	5/16-24UNF-2A	.297	.250
-03	3/8-24UNF-2A	.297	.313
-04	7/16-20UNF-2A	.360	.364
-05	1/2-20UNF-2A	.360	.427
-06	9/16-18UNF-2A	.391	.482
-08	3/4-16UNF-2A	.438	.660
-10	7/8-14UNF-2A	.500	.773
-12	1 1/16-12UN -2A	.594	.945
-14	1 3/16-12UN -2A	.594	1.070
-16	1 5/16-12UN -2A	.594	1.195
-20	1 5/8-12UN -2A	.594	1.507
-24	1 7/8-12UN -2A	.594	1.756
-32	2 1/2-12UN -2A	.594	2.381

MASTER

SAMPLE PART NUMBER  
38007-1-04-06

BASIC PART NO. [ ] 37° FLARE PER SAE J514 (TABLE 2)  
MATERIAL DESIGNATION [ ] MATES WITH MS16142 (TABLE 3)  
(TABLE 1)

UNLESS OTHERWISE SPECIFIED: DIMENSIONS ARE IN INCHES TOLERANCES .XXX = ± .010 .XX = ± .05 .X = ± .1 ANGLES = ± 0°30'		<b>PI PREECE INC.</b> 11 CHRYSLER IRVINE, CA 92618		<b>DECCA VALVE 3</b> A DIVISION OF PREECE INC.	
CAD FILES	38007S	ADAPTER, 3000 PSI MALE 37° FLARE TO STRAIGHT THREAD			
DFT	J.G.	07/15/97	SIZE	CODE IDENT NO.	DWG NO.
CHK	P.S.	10/21/97	B	21392	38007-S
DES			OTHER ACTIVITY APPD		REV LTR
PREECE APPD	K. CHING	10/21/97	SCALE	2/1	RLSE DATE
					SHEET 1 OF 1

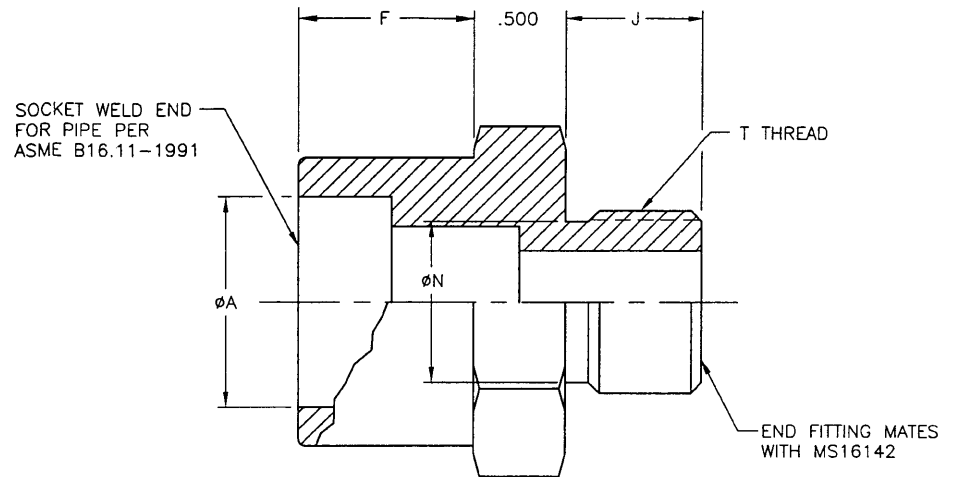
1ST DASH NO.	DESCRIPTION
-1	CRES 304
-2	CRES 316
-5	MONEL PER QQ-N-281
-6	70-30 COPPER-NICKEL PER MIL-C-15726
-7	90-10 COPPER-NICKEL PER MIL-C-15726

2ND DASH NUMBER	NOM PIPE SIZE	ØA ±.010	F ±.010
-02	1/8	.430	.535
-04	1/4	.565	.535
-06	3/8	.700	.535
-08	1/2	.865	.600
-12	3/4	1.075	.890
-16	1	1.340	.890
-20	1 1/4	1.685	.890
-24	1 1/2	1.925	.890
-32	2	2.416	1.200

3RD DASH NUMBER	T THREAD	J ±.005	N +.002 -.003
-02	5/16-24UNF-2A	.297	.250
-03	3/8 -24UNF-2A	.297	.313
-04	7/16-20UNF-2A	.360	.364
-05	1/2 -20UNF-2A	.360	.427
-06	9/16-18UNF-2A	.391	.482
-08	3/4 -16UNF-2A	.438	.660
-10	7/8 -14UNF-2A	.500	.773
-12	1 1/16-12UN -2A	.594	.945
-14	1 3/16-12UN -2A	.594	1.070
-16	1 5/16-12UN -2A	.594	1.195
-20	1 5/8 -12UN -2A	.594	1.507
-24	1 7/8 -12UN -2A	.594	1.756
-32	2 1/2 -12UN -2A	.594	2.381

This drawing contains designs and other information which are the property of PREECE INC. Except for rights expressly granted by contract to the United States Government, this drawing may not, in whole or in part, be duplicated or disclosed or used for the manufacture of the part disclosed herein, without the written permission of PREECE INC.

LTR	DESCRIPTION	DATE	APPROVED
N/C	INITIAL RELEASE PER EO 6311	10/21/97	K.C.
A	REVISED PER EO 6379	12.12.97	<i>[Signature]</i>



WORKING COPY

SAMPLE PART NUMBER  
38008-1-08-10

BASIC PART NUMBER ————  
MATERIAL DESIGNATION (TABLE 1) ————  
THREAD SIZE MATES WITH MS16142 (TABLE 3) ————  
PIPE SIZE (TABLE 2) ————

UNLESS OTHERWISE SPECIFIED: DIMENSIONS ARE IN INCHES TOLERANCES .XX = ±.010 .X = ±.03 Ø = ±.1 ANGLES = 30°/30°		<b>P PREECE INC.</b> 11 CHRYSLER IRVINE, CA 92618		<b>DECCA</b> VALVES A DIVISION OF PREECE INC.	
CAD FILES	38008-S	ADAPTER, CLASS 3000 PSI SOCKET WELD TO STRAIGHT THREAD			
DTY	J.G.	07/07/97	SIZE	CODE IDENT NO.	DWG NO.
CHK	P.S.	10/21/97	B	21392	38008-S
DES			OTHER ACTIVITY APPD		REV LTR
PREECE APPD	K. CHING	10/21/97	SCALE	2/1	RLSE DATE
					SHEET 1 OF 1